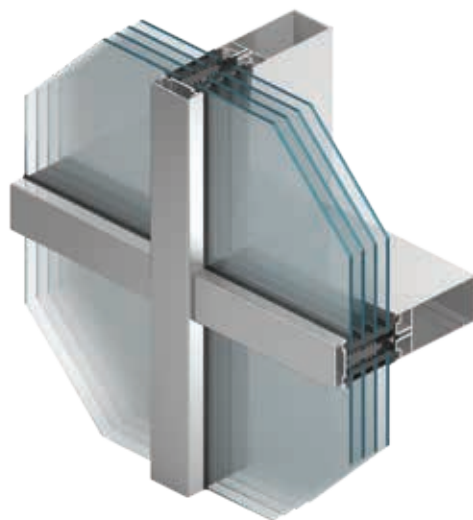




LET'S BUILD A BETTER FUTURE

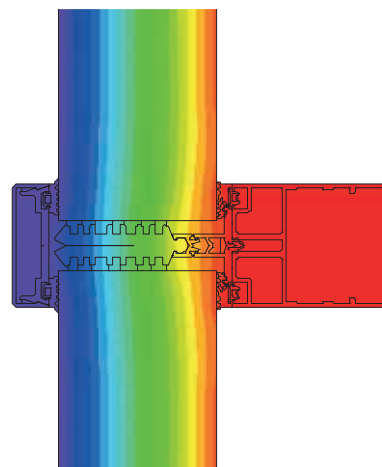
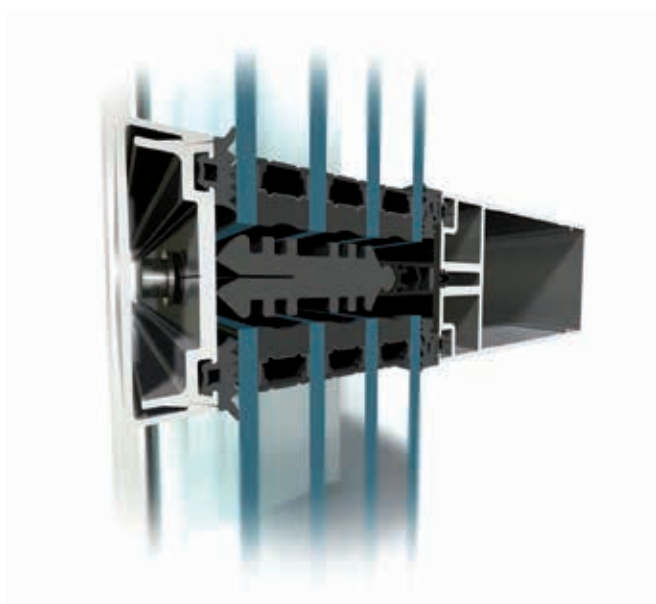
## Façade systems **MB-TT50**

The new and innovative MB-TT50 goes a step beyond standard stick systems in terms of performance and functionality. It offers exceptional insulation and weather performance achieved by special 3 zone cascade drainage and ventilation of the glazing rebates. It's innovative design saves time and therefore money on fabrication due to square cut transom to mullion connection. The standard configuration of the system can be enhanced to conform to security requirements.



**thermal insulation:  $U_f$  from 0,5 W/(m<sup>2</sup>K)**

**CWCT compliant**



Distribution of isotherms in façade MB-TT50

## FEATURES AND AESTHETICS

- enhanced thermal insulation –  $U_f$  from 0,6 W/(m<sup>2</sup>K)
- glazing up to 64 mm
- wide variety of angular connections to allow greater design flexibility
- high capacity mullion-transom connections (3,0 KN) coupled with wide range of glazing to allow the use of large size, heavy glazing panes
- transom-transom constructions option
- 3 zone drainage and ventilation system reinforced with set of gaskets to provide protection against the most unfavorable weather conditions
- selection of windows and doors available including roof vents, concealed vents and parallel windows
- semi structural EFEKT glazing option
- compliance with CE marking requirements



TECHNICAL SPECIFICATION		MB-TT50
Mullions depth		65 – 245 mm
Transom depth		64 – 244 mm
Inertia mullions (range Ix)		35.41 – 1639.59 cm <sup>4</sup>
Inertia transoms (range Iz)		28.53 – 1233.76 cm <sup>4</sup>
Glazing thickness		do 64 mm
Max weight of façade pane		600 kg

PERFORMANCE		MB-TT50
Air Permeability		class AE 1350Pa, EN 12153; EN 12152
Watertightness		class RE 1800Pa, EN 12155; EN 12154
Windload resistance		2700Pa, EN 12179; EN 13116
Impact resistance		class I5/E5, EN 13049, EN 14019
Thermal insulation		$U_f$ from 0.5 W/(m <sup>2</sup> K)